



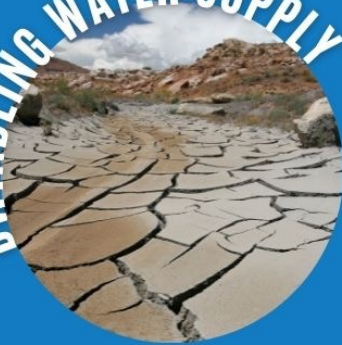
MOHAVE COUNTY WEST BASIN WATER USERS STUDY COMMITTEE

August 11, 2021





DWINDLING WATER SUPPLY

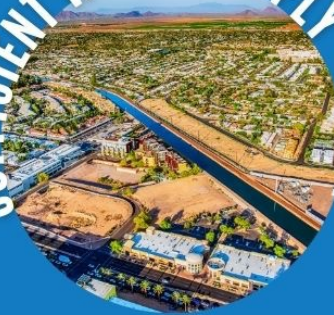


76%

of likely voters believe
that the State of
Arizona is currently
EXPERIENCING A DROUGHT



SUFFICIENT WATER SUPPLY



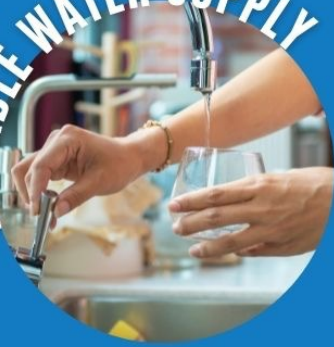
65%

of likely voters
DO NOT BELIEVE THERE IS
ENOUGH WATER
for residents,
agriculture, industry &
other businesses for
the next 100 years



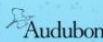


RELIABLE WATER SUPPLY



92%

of likely voters rank
Ensuring reliable water
supply as
"IMPORTANT"



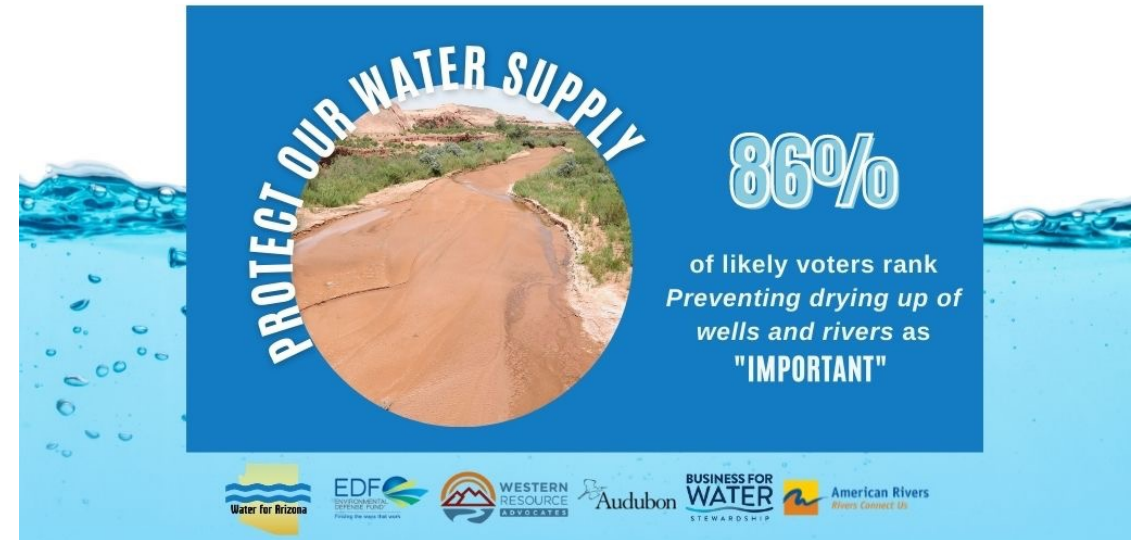
AFFORDABLE WATER SUPPLY



86%

of likely voters rank
Ensuring affordable
water supply as
"IMPORTANT"









MANAGE OUR WATER SUPPLY




78%

of likely voters rank
*Protecting Arizona
farming & ranching as
"IMPORTANT"*



LONG-TERM WATER SUPPLY



#3

Likely Arizona voters
rank *Long-term water
supplies* as the
**3rd top issue facing
Arizona**

